

Installation and Operation Instruction

(Shower room)

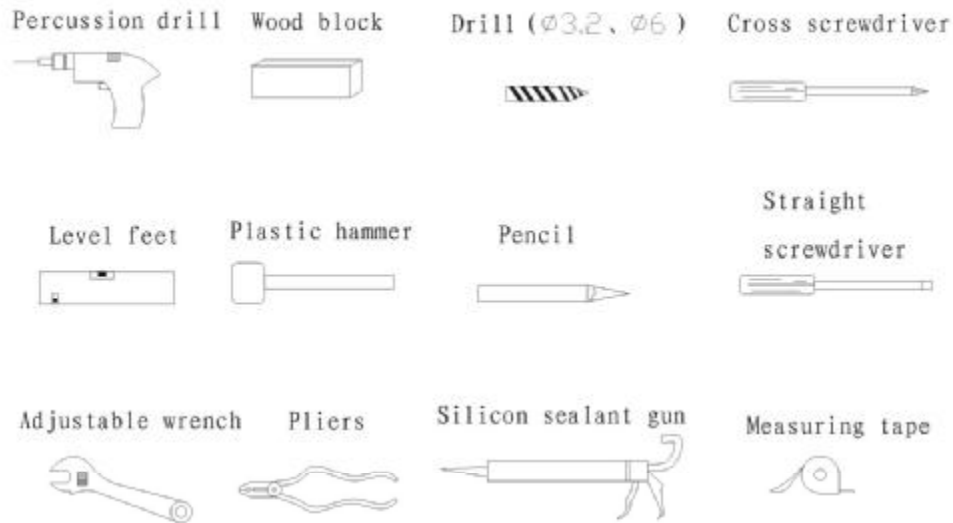
M-633 Shower room

Installation and Operation Instruction

Packing list (FIGURE 1):

Num.	Name	Quantity	Num.	Name	Quantity
1	Frame by wall	two pieces	11	Seal strip	two pieces
2	Frame cap by wall	two pieces	12	4*30self-tapping screw	ten pieces
3	Fixed glass frame	two pieces	13	Rubber tube	six pieces
4	Fixed glass frame cap	two pieces	14	Fixed glass card	four pieces
5	4*12round self-tapping screw	six pieces	15	Pully gland	four pieces
6	Screw cap	six pieces	16	Handle	two pairs
7	Fixed glass	two pieces	17	Corners	two pieces
8	Ajustable glass	two pieces	18	Side waterproof plastic	four pieces
9	Plastic magnatic strip	two pieces	19	Fixed glass gland	four pieces
10	Pully	eight pieces	20	Pully gland	two pieces

Requisite Tools:



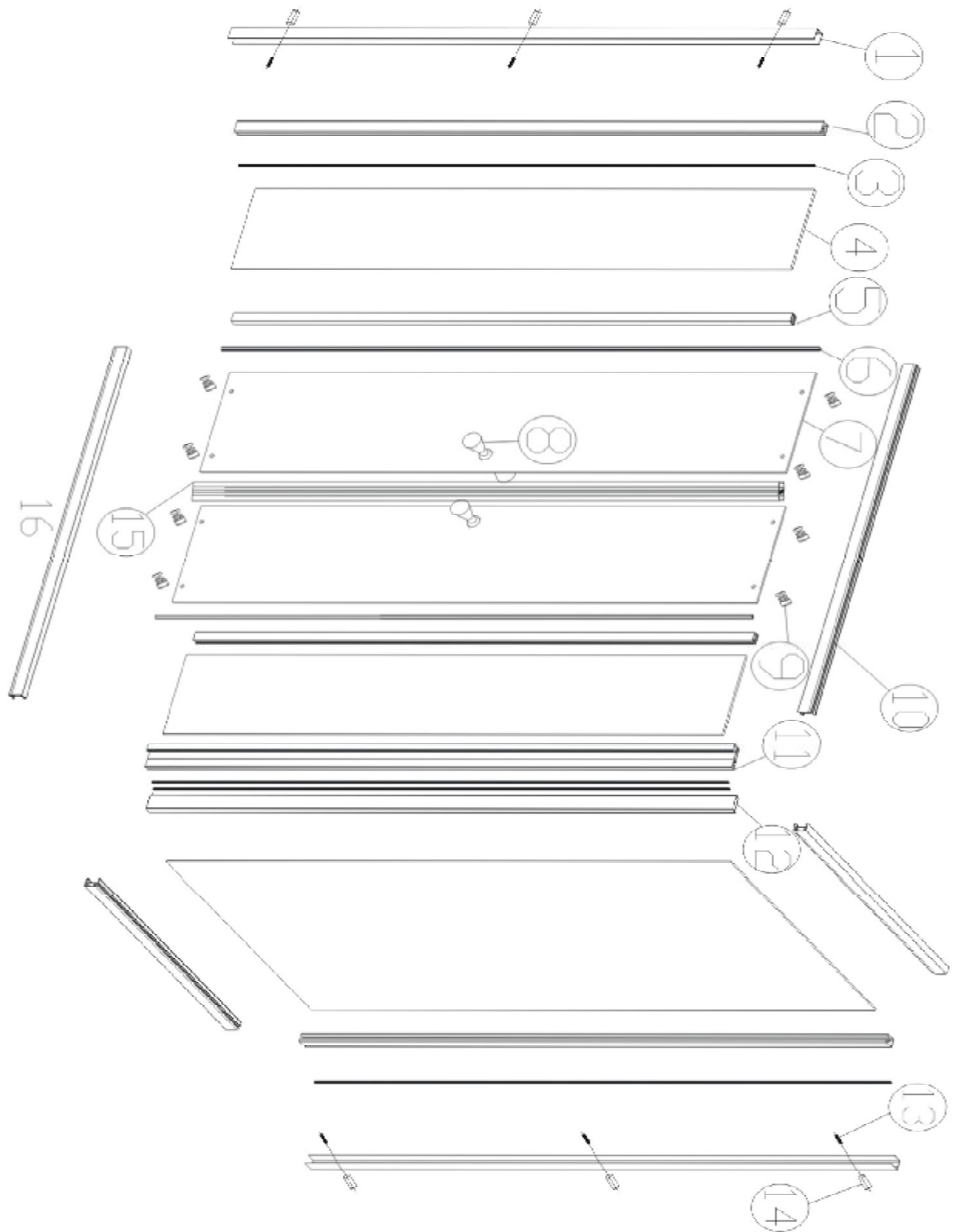


Figure 1

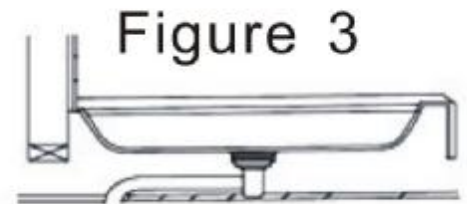
First insralled shower tray.Installation steps are as followes:

First,set aside the outfall level in the washroom before the installation of shower tray should match with the outfall level. (Figure2)



Second,if the outfall level of washroom has been fixed,and can not be adjusted to match with the drainage hole ,then connect a hose for both .

Make sure there is enough space for connecting hoses through the drainage hole and the ground outfall level.(Figure 3)



Third,adjust the bottom of chassis fraame to makw the side of drainage hole slightly lower(Figure 4)

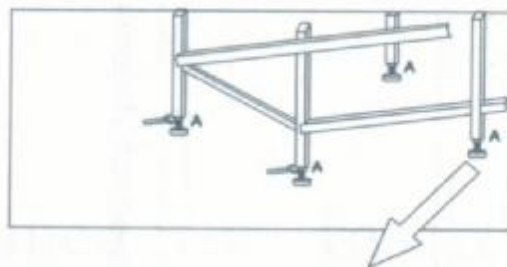
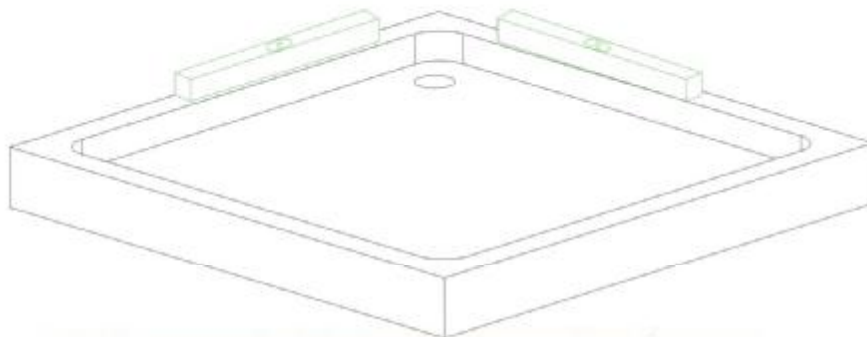
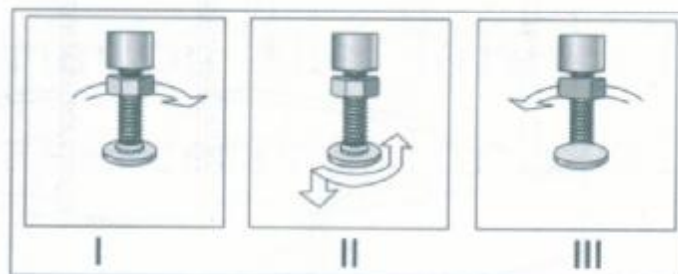
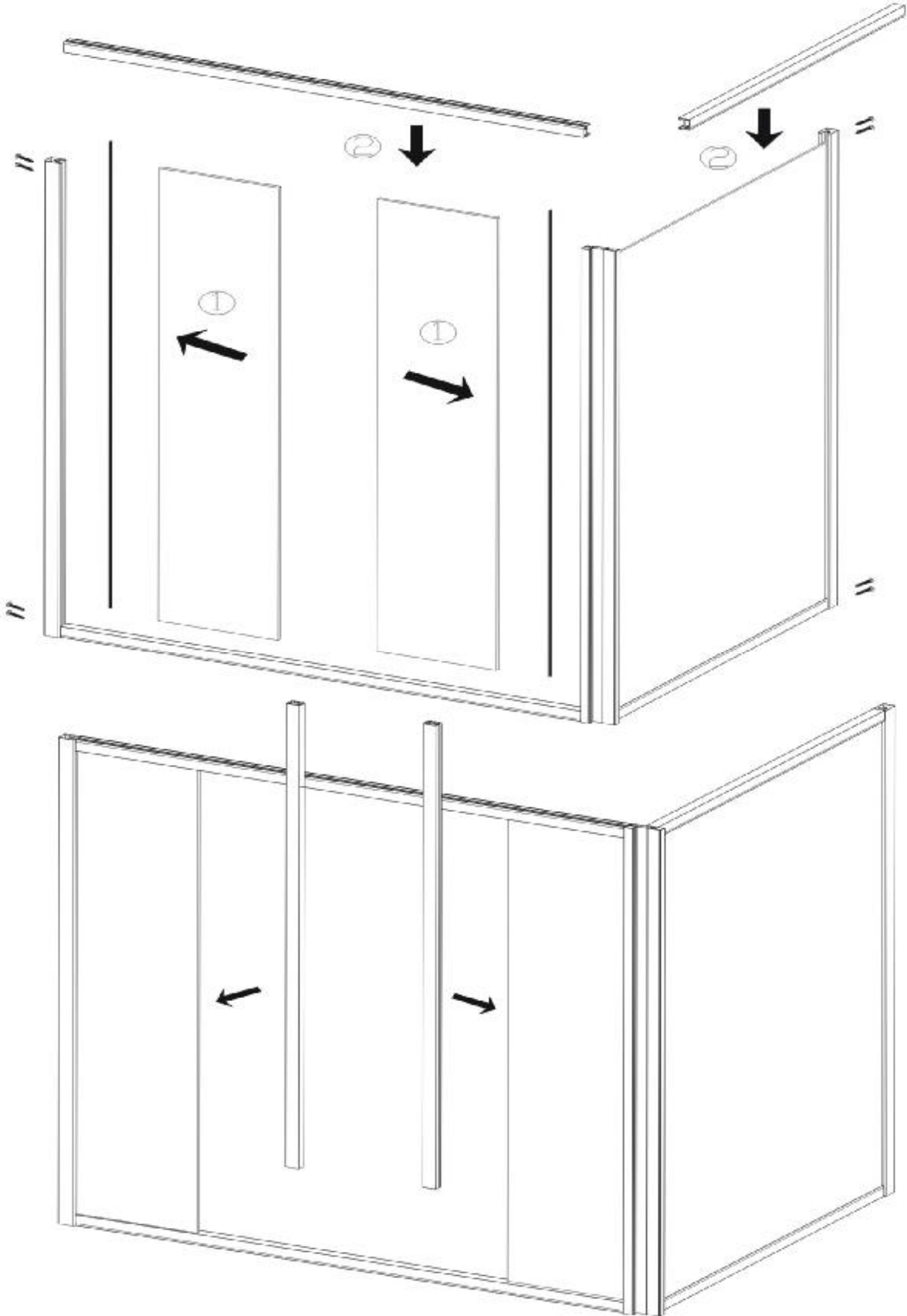


Figure 4



The installation steps of the shower body: :



1. Put the packaged gantry mounting on the chassis or stand, and use the level ruler and sash weights to keep it balance. And then mark the place of the wall frame with pencil.
2. Put the frame that is next to the wall on the marked place, making it horizontally be vertical against the bottom tray, and find the right place and mark for holes with pencil. Drill holes with the percussion drill and knock expansion tube into it. Use the ST4X30 countersunk self-tapping screw to lock the wall frame.
3. Pack the gantry mounting onto the outside of the wall frame.
4. Install the pulley on the ajustable glass, suspend the pulley on the orbit, and set to the appropriate place , screw down pulley and lock the nut.(Figure 8)
5. Finally, install handle and waterproof stripe.
6. Lock the wall frame and fixed frame with ST4X20 countersunk self-tapping screw, and then put on screw cap.
- 7.use the glass glue to seal the body and the bottom gap, and the shower room is ready after 24 hours.

Figure 7

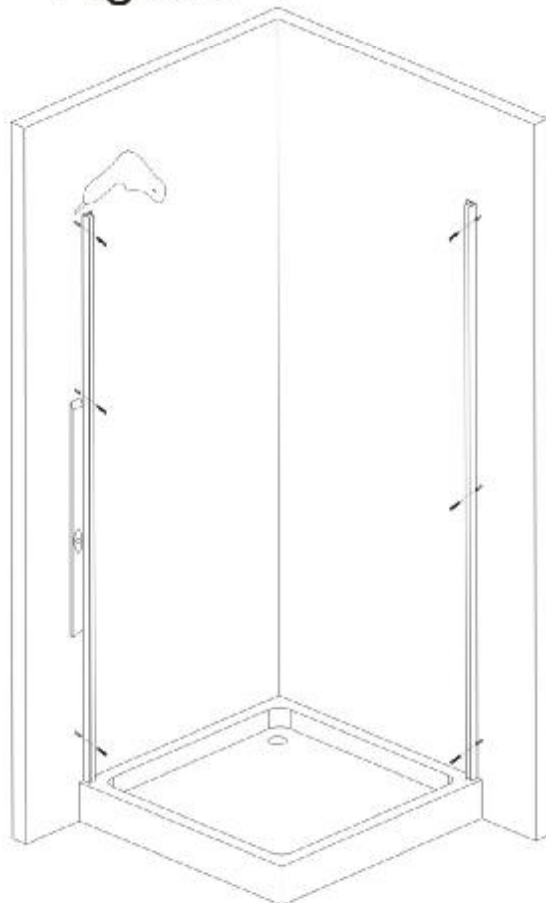
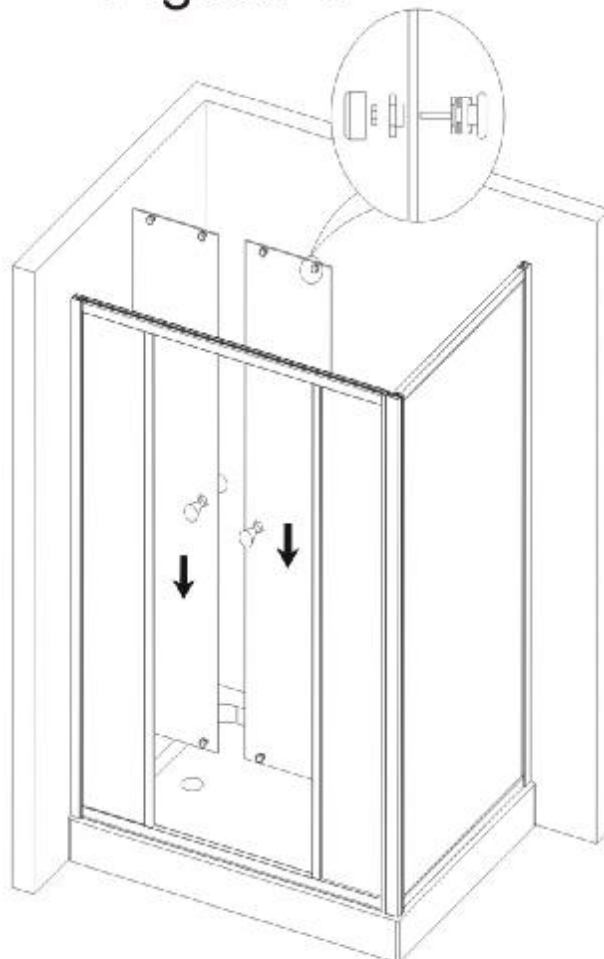
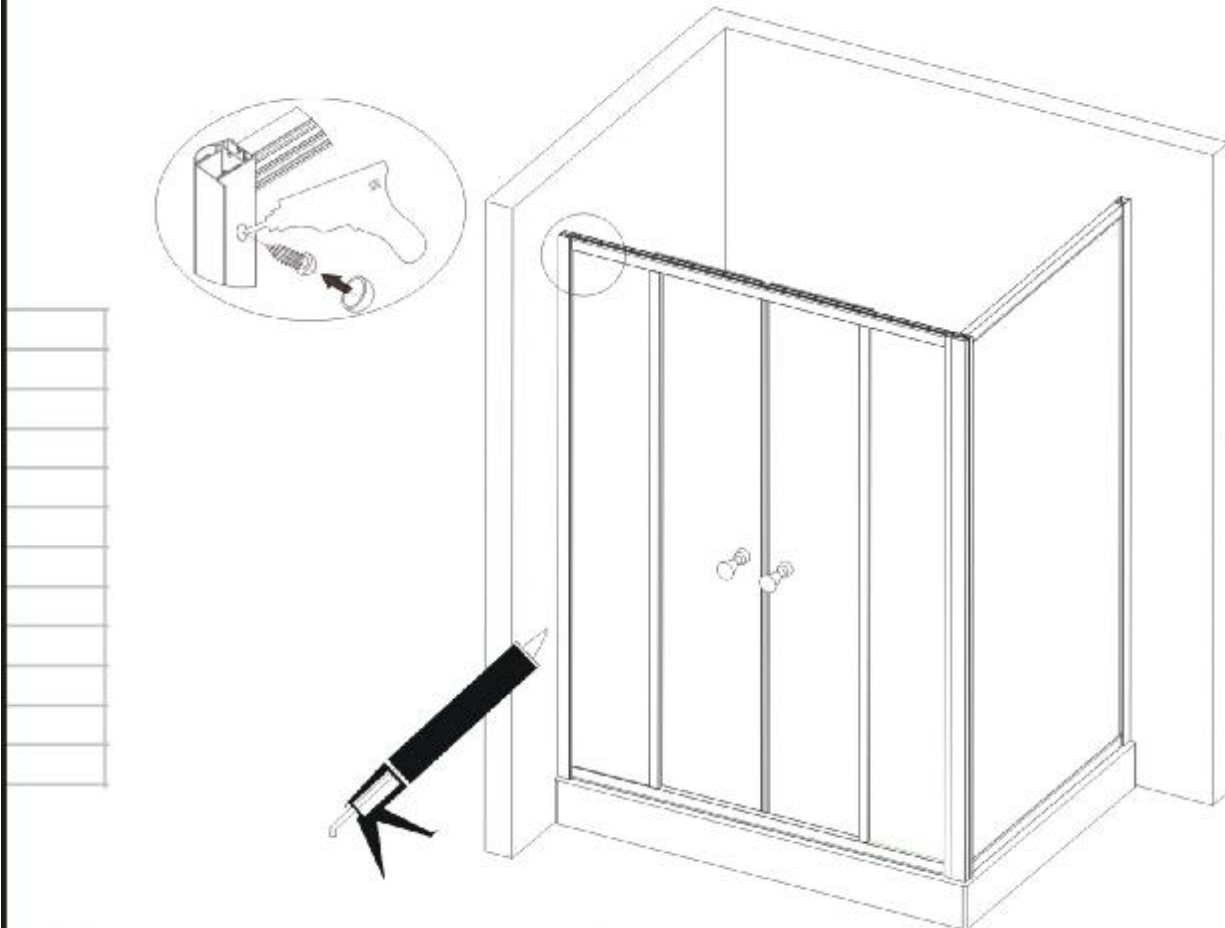


Figure 8





Manitenance Methods and Notes

1, Use soft,dry cloth when cleaning the walls and chassis of shower room.

For trivial dirt, use soft cloth or sponge with neutral detergent to clean.

Please do not use Nylon products to clean, or it will lose the luster of shower room , and create dirt.

2, For the dense dirt, please use alcohol to remove them. When using the bathroom-exclusive detergent, please make sure to use it at a proper way and note on their container. Improper usage will have a negative impact on the human body, and create some adverse conditions on the products.

3, When using the Mildew, please operate it by Mildew Manual instructions.

After finished, clean it with water and dry it with cloth.

4,If waterproof filler loses,it will lead to leakage. Therefore,once lost, be sure